



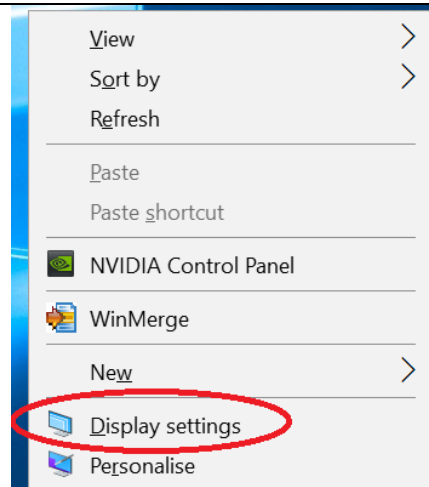
DCS MULTIMONITOR WITH MFCD, AMPCD AND KNEEBOARD EXTRACTION NOW AVAILABLE ALSO ON TABLET IOS AND ANDROID

I thank all those who have shared on DCS forum the different (a little scattered) solutions, which I have simply gathered in this guide!

Write down the physical configuration of the monitors:

(With Windows 10)

Right click on a free desktop place and from the context menu select **Display settings**

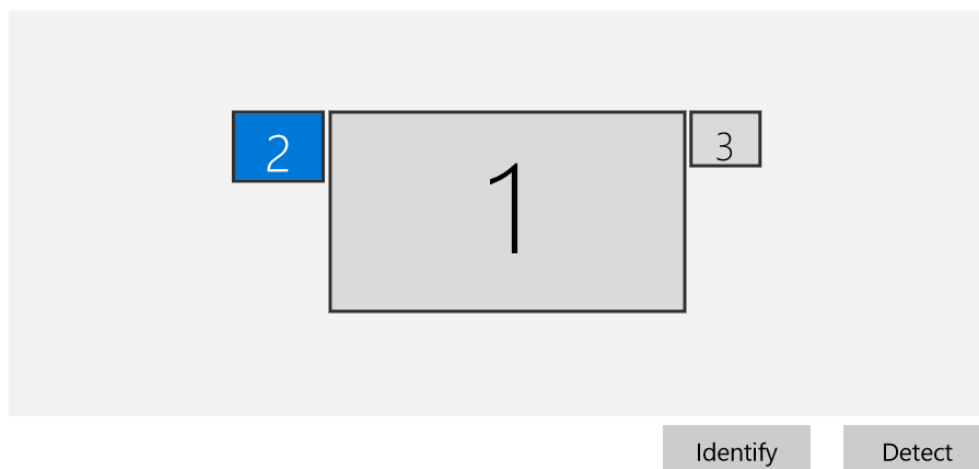


The window opens with your monitor configuration, here is mine with the monitor #2 on the left **highlighted**

Display

Select and rearrange displays

Select a display below to change its settings. Some settings are applied to all displays.





Here on the side there are the properties of the **highlighted** screen, which I show you in the example #2, the one on the left.

Please notice that the **Multiple displays** setting is set to **Extend desktop to this display** and the **Make this my main display** item is **not checked** because in my case the main screen is obviously the central screen.

Write down the **resolution** of this first screen which, in my example, is **1024x768**

Colour

Night light

☐ Off

[Night light settings](#)

Scale and layout

Change the size of text, apps and other items

100% (Recommended)

[Advanced scaling settings](#)

Resolution

1024 × 768

Orientation

Landscape

Multiple displays

Multiple displays

Extend desktop to this display

☐ Make this my main display

NO

Select the other screens, in my case #1 and #3 writing down their respective resolutions. Here are mine

For my #1 which is the central and main one is **3840x2160**

Colour

Night light

☐ Off

[Night light settings](#)

Scale and layout

Change the size of text, apps and other items

150% (Recommended)

[Advanced scaling settings](#)

Resolution

3840 × 2160 (Recommended)

Orientation

Landscape

Multiple displays

Multiple displays

Extend desktop to this display

☒ Make this my main display

For my #3 on the right is **800x600**

Colour

Night light

☐ Off

[Night light settings](#)

Scale and layout

Change the size of text, apps and other items

100% (Recommended)

[Advanced scaling settings](#)

Resolution

800 × 600

Orientation

Landscape

Multiple displays

Multiple displays

Extend desktop to this display

☐ Make this my main display

NO

So in my case I will have an overall horizontally resolution $1024 + 3840 + 800 = 5664$, while the vertical is the largest of the three screens 2160 then

5664x2160



Configure DCS for the multimonitor:

1) before entering DCS

Now go to your **Saved Games\DCS.openbeta** folder located in:

C:\Users\YOUR USER \Saved Games\DCS.openbeta

if it doesn't already exist, create a **Config** folder, then enter it ...

...and if it is not already there, create a **MonitorSetup** folder

At the end you will have a folder:

C:\Users\YOUR USER\Saved Games\DCS.openbeta\Config\MonitorSetup

Now enter in the same folder in the path of DCS, typically

YOUR HARD DISK:\Eagle Dynamics\DCS World OpenBeta\Config\MonitorSetup

There are several preconfigured files, **copy** the one you are interested in, in my case with 3 screens I chose

LMFCD+Camera+RMFCD.lua

and **paste** it in the previous folder in Saved games, that is

C:\Users\YOUR USER\Saved Games\DCS.openbeta\Config\MonitorSetup

Rename the file you've just copied, I called it **Mie3Schermi.lua**, and make a backup of that, too.

Now with a pure text editor, I recommend you **Notepad ++** which you can download from here

<https://notepad-plus-plus.org/>

you will have to modify the file according to your needs and save it; here's how I modified mine that you find here attached:

```
_ = function(p) return p; end;
name = _('Mie3Schermi');
Description = 'Left MFCDD on the left monitor,Right MFCDD on the right and camera on the center'
Viewports =
{
    Center =
    {
        x = 1025;
        y = 0;
        width = 3840;
        height = 2160;
        viewDx = 0;
        viewDy = 0;
        aspect = 3840/2160;
    }
}

LEFT_MFCD =
{
    x = 619;
    y = 40;
    width = 365;
    height = 365;
    aspect = 1024/768;
}

RIGHT_MFCD =
{
    x = 4920;
    y = 74;
    width = 400;
    height = 384;
    aspect = 800/600;
}

--AMPCD
F18_AMPCD =
{
    x = 0;
    y = 0;
    width = 560;
    height = 560;
    aspect = 1024/768;
}

UIMainView = Viewports.Center
```



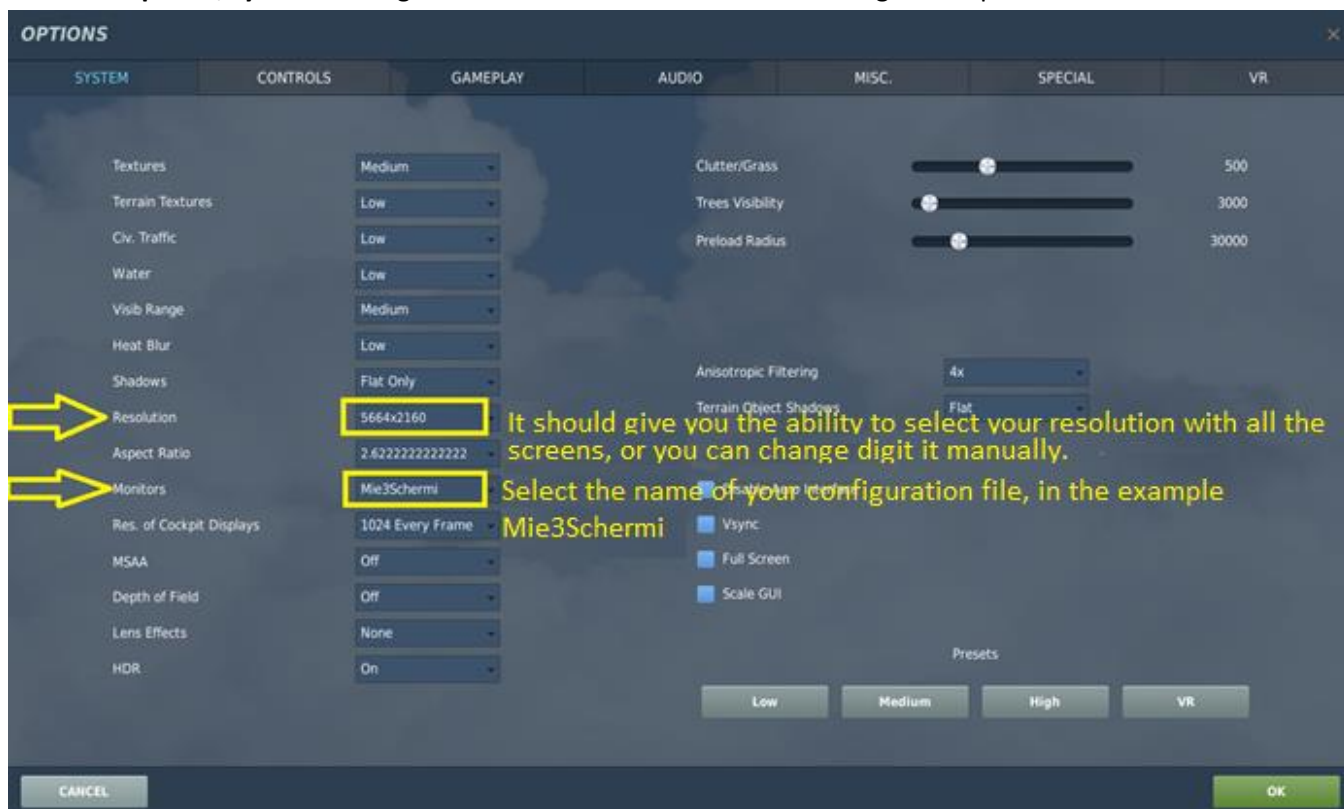
Link for the frames MFD Cougar Pack Thrustmaster http://www.thrustmaster.com/it_IT/prodotti/mfd-cougar-pack

2) Configuration in DCS

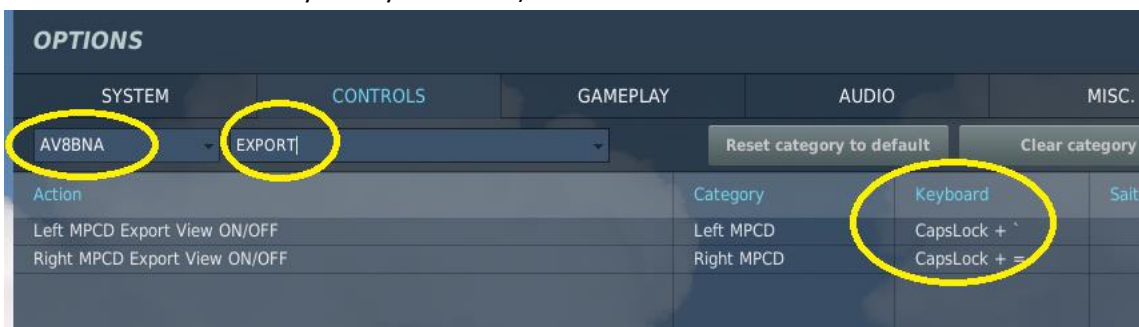
Start DCS and choose the configuration



and then **Options/System** looking at **Resolution** and **Monitors** and setting it as in previous notes



Now, but this applies **only to the Harrier**, choose the AV8BNA Controls, look for EXPORT and assign a combination of free keys to the two commands that will make the MFCD appear and disappear (the display of the MFCD is not stored but it must be activated every time you need it).



The F18 already shows the extracted MFCDs; however, further work is required as described below



3) Configuration for F18

A. To me, all characters of the MFCDs are blurred and as a consequence, completely useless.

On this post <https://forums.eagle.ru/showpost.php?p=3555530&postcount=118> I found the solution that I implemented as a mod to be activated with JSGME or OvGME, not to change the originals

As an alternative to the mod, you should modify the file

YOUR HARD DISK:\Eagle Dynamics\DCS World OpenBeta\Mods\aircraft\FA-

18C\Cockpit\Scripts\Multipurpose_Display_Group\Common\indicator\MDG_strokesDefs.lua as follows:

```
stroke_thickness = 0.4 -- in place of the original 0.8
stroke_fuzziness = 0.2 -- in place of the original 0,5
DMC_outline_thickness = stroke_thickness * 3 -- unchanged
DMC_outline_fuzziness = stroke_fuzziness * 1.13 -- unchanged
DMC_stroke_thickness = 0.4 -- in place of the original 0.65
DMC_stroke_fuzziness = 0.2 -- in place of the original 0.42
```

B. It is necessary to activate the extraction of the central AMPCD, so on page 3 we have set the position.

Also here I found the solution on the forum post #9: <https://forums.eagle.ru/showthread.php?t=214941> that I inserted in the same mod to be activated with JSGME or OvGME referred to in the previous point

As an alternative to the mod, you should modify the file **YOUR HARD DISK:\Eagle Dynamics\DCS World OpenBeta\Mods\aircraft\FA-**

18C\Cockpit\Scripts\Multipurpose_Display_Group\AMPCD\indicator\AMPCD_init.lua inserting:

```
----- added by Capt Zeen
dofile(LockOn_Options.common_script_path.."ViewportHandling.lua")
try_find_assigned_viewport("F18_AMPCD")
----- end of added by Capt Zeen
```

The mod is attached to this post and is called: **_Bat Miei MFD ESTRATTI FA-18C**

4) Configuration for Kneeboard (see this post <https://forums.eagle.ru/showpost.php?p=2203108&postcount=2>)

For the Kneeboard the mod is called **_Bat My Kneeboard** and changes the file **YOUR HARD DISK\Eagle**

Dynamics\DCS World OpenBeta\Scripts\Aircrafts_Common\Cockpit\ViewportHandling.lua inserting at the beginning 4 lines, whose values need to be obtained. In my case they start from kneePosY = 0 e kneePosX = 0, the left upper corner of the left monitor (in the same position where the F18's AMPCD is extracted) with the dimensions kneeX = 550 e kneeY = 752

```
local kneeY = 752 -- height dedicated to kneeboard on monitor of 1024x768
local kneeX = 550 -- width dedicated to the kneeboard on a monitor di 1024x768
local kneePosY = 0 -- initial position Y of kneeboard display
local kneePosX = 0 -- initial position X of kneeboard display
```

Then editing the line

```
dedicated_viewport = {kneePosX,kneePosY,kneeX,kneeY} -- in place of the original
dedicated_viewport = {default_x,default_y,default_width,default_height}
```

Activation of the Kneeboard is carried out with the usual combination of keys Shift Right + K and for the pagination, the usual keys [and] (or maybe { and })



Extraction on both iOS and Android tablets

I tried **Spacedesk**, whose site is <https://www.spacedesk.net/>, with the respective apps for **iOS** and **Android**, but also **Windows** and **HTML5**. On the date of writing, 08/28/2018, it is in free beta. It is possible to connect multiple tablets. It consists of a "server" program **to be installed** on the PC, to which the above-mentioned **apps (to be installed on the tablet) automatically connects by WIFI**. This program together with the app, turns the tablet into a monitor with already **automatically** extended Windows desktop.

We can use the tablet to extract the AMPCD and place it wherever you want.

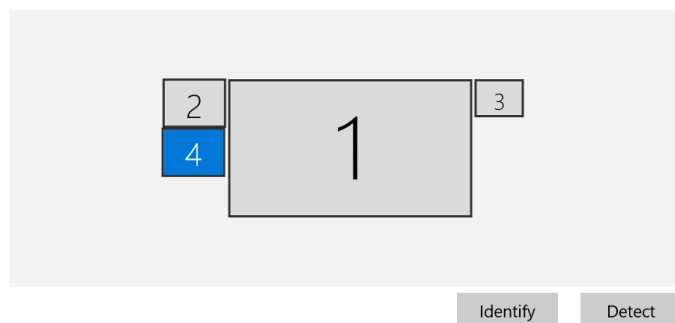
In my current configuration I have the two MFCs extracted inside the MFD Cougar Pack frames on the two monitors on the left and right of the central one, as well as the AMPCD extracted inside a further MFD Cougar Pack frame, in the middle under the main monitor, as in the F18 cockpit.

Here is my monitor configuration in Windows, with the tablet #4, an iPad mini. Notice that I dragged it to the left under #2, even though the iPad is physically under the center of the monitor #1; this allows me to use my overall resolution **5664x2160** as we saw on page #2; the only drawback is that to bring the mouse inside the tablet, I have to move it from the bottom of the monitor #2 or from about a third of the left side of the central menu, but this is absolutely irrelevant in DCS.

Display

Select and rearrange displays

Select a display below to change its settings. Some settings are applied to all displays.



Colour
Night light
☐ Off

[Night light settings](#)

Scale and layout

Change the size of text, apps and other items

100% (Recommended)

[Advanced scaling settings](#)

Resolution

1024 × 768

Orientation

Landscape (flipped)

Multiple displays

Multiple displays

Extend desktop to this display

☐ Make this my main display

NO

I also attach the new 4-screen configuration to be loaded in DCS (see page #3), with the name **Mie4Schermi.lua**
I hope I haven't forgot anything. Have fun!

This guide is **TOTALY FREE**

If you found it useful, consider
offering me a glass of beer!

Donazione

Piacenza 30/09/2018
Carlo bat Ombri
carlo.ombri@pvi.it
www.pvi.it